

**Brilliant<sup>®</sup>**

QUARTZ & SOLID  
SURFACING MATERIALS



## INTRODUCTION

# BRILLIANT'S STORY

Brilliant was founded in 1993 in Toronto, Canada and since then we have expanded into Asia. We are and will continue to maintain high quality products for residential and commercial projects.

Every year, Brilliant introduces new colours and different products that are eco-friendly and sustainable to our environment. That is why top designers throughout the world have used Brilliant Solid Surface for both residential and commercial purposes.

Are you an interior designer choosing a countertop? Or are you a designer working on endless commercial cases? No matter what the project is, you will be delighted to know that Brilliant offers 6 different colour collections and it is ready for any occasion.

Brilliant is celebrating our 23rd anniversary and we would like to thank you for your support. We continue to be excited to maintain our current connections with our customers and are eager to create new ones. To learn more, log on to **[www.brilliantsurfacing.com](http://www.brilliantsurfacing.com)**

## INTRODUCTION

# ABOUT BRILLIANT

Are you a strong believer in keeping our Earth green? Do you want customized products to match your personality and flare? Do you believe in quality products in conjunction with convenience? If you've answered yes to all three questions; Brilliant is thrilled to announce after 20 years in this industry we continue to put our customer's needs first and is happy to be able to offer that and much more.



**Eco-Friendly:** Made to match your style, while staying eco-friendly.



**Multiple Applications:** Versatility is Brilliant's middle name.



**One Stop Shop:** Pair your countertop with one of our sinks and finish off the process with one our stainless steel colanders.



## OUR CERTIFICATIONS

Brilliant's 15 Year Warranty: All new Brilliant solid surface owners are entitled to a 15-year Limited Warranty. See warranty guidelines at [www.brilliantsurfacing.com](http://www.brilliantsurfacing.com)



### Greenguard Certification

Being Greenguard certified will help buyers recognize that Brilliant's solid surface have low chemical emissions, which improves the quality of the air. By being Greenguard certified Brilliant is staying true by promoting and maintaining an eco-friendly environment for all. To learn more about Greenguard, visit: <http://www.greenguard.org/>



### NSF (National Sanitation Foundation)

NSF is an independent, not-for-profit, global public health and safety organization. They are known to certify products worldwide that are recognized for their high standards in keeping your water, air and products safe for you and your loved ones. Brilliant is proud to be NSF certified. To search for our listing with NSF or to learn more about this great organization when it comes to protecting our society; please visit their website at <http://www.nsf.org>



### ISFA (International Surface Fabricators Association)

Formerly known as ISSFA International Solid Surface Fabricators Association. Now known as ISFA, it is an organization dedicated to all the professionals, and fabricators worldwide in the countertop industry. Being a member of the ISFA, allows Brilliant to proudly say that we are educated and we are better craftsmen today than we were yesterday. Brilliant has been and will continue to be a proud member of the ISFA. To learn more about this incredible organization, visit their website. <http://www.isfanow.org>



### ISO9001 (International Standards Organization)

The 9001 certification is for Quality Management Systems. Every aspect of the process is controlled, monitored and repeated with precision and diligence. Brilliant Solid Surface is the first solid surface company in Asia to receive this certification. We are pleased to bring quality solid surface worldwide. To learn more about this certification, visit: <http://www.iso.org>



### NKBA (National Kitchen and Bath Association)

The NKBA is an organization dedicated to all who are in the kitchen and bath industry. Members include manufacturers, students, distributors, retailers, etc. NKBA have many members worldwide and has been collaborating with KBIS (Kitchen and Bath Industry Show). Brilliant is and will continue to be a member of NKBA. To learn more about this association, visit their website. <http://www.nkba.org>



### SGS (Société Générale de Surveillance)

This organization is one of the world's leaders for inspection, testing, certification and verification for the quality and integrity of products. Brilliant has complied with global regulations and it is stated that we have met the standards of food safety and product quality performance. To learn more about SGS visit <http://www.sgs.com>



### CMA (Chinese Manufacturers Association Hong Kong)

The CMA is an independent quality assurance organization in Hong Kong. CMA goes through a thorough process of testing, inspecting and certifying for the quality and safety of products. Brilliant is proud to declare that we are CMA certified. Being certified by the CMA allows us to help promote Hong Kong's trade and industrial development and participate in community development work. Want to learn more about CMA, visit: <http://www.cma.org.hk/>

## OUR WORK

# SELECTED PORTFOLIO

### Multiple Applications. Versatility is Brilliant's Middle name.

With your imagination in conjunction with Brilliant Solid Surface, the possibilities are endless.

- ▶ Beautiful Bathrooms
- ▶ State-of-the-art Kitchens
- ▶ Commerical and Public Spaces
- ▶ Work Environments and Office Furniture
- ▶ Hospitals and Schools
- ▶ We can custom make almost anything you can imagine!



Glacier White 8924



Congo White 6638



HSBC Guangzhou  
Black 6160

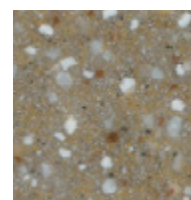


White 3130

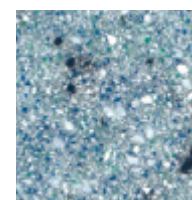
01

# ENVIRONMENTAL COLLECTION

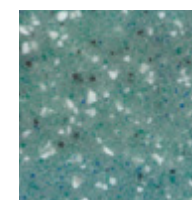
Brilliant is a strong believer and contributor to being environmentally friendly. Whenever you look at these colours it will be a little reminder to continue to keep our Earth green.



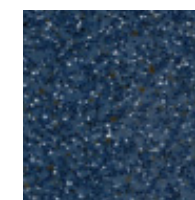
Brown Seaweed  
5505



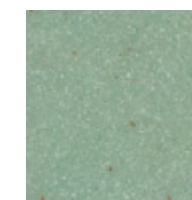
Rail Blue  
6614



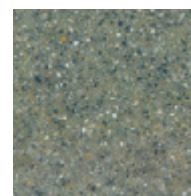
Dolphin Green  
6616



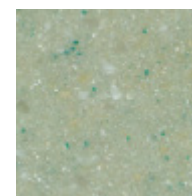
Bright Blue  
6620



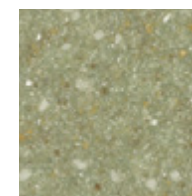
Pastel Green  
6625



Dark Forest  
6657



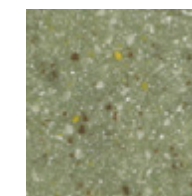
Ceylon Green  
6659



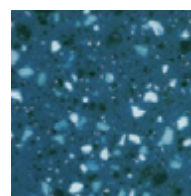
Pinecone  
6696



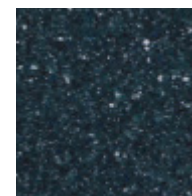
Summer Harvest  
6698



Olive Green  
8811



Lapis Night  
8910



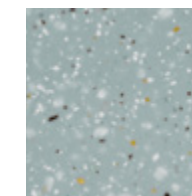
Rainforest  
8918



Early Spring  
8928



Frost Lake  
8951



Spring Pond  
8952



Brown Seaweed 5505

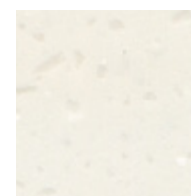


Lapis Night 8910

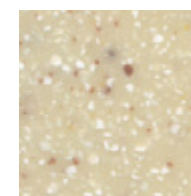
02

# COMMERCIAL COLLECTION

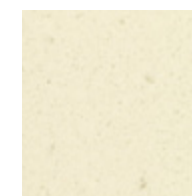
The intention of the colours chosen for this collection is to bring a sense of comfort and warmth into commercial buildings. Colours that are easy on the eyes and calming to the mind.



Congo White  
6638



Yellow Rose  
6692



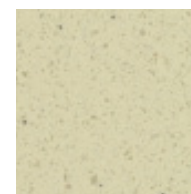
Blaze  
8813



Pink Diamond  
8815



Blizzard  
8866



Natural Concrete  
8908



Snow Sliver  
8911



Pearl Quartz  
8912



Jazz White  
8917



Crushed Pink  
8922



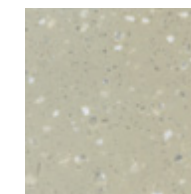
Sibsagar Primrose  
8923



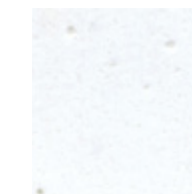
Glacier White  
8924



Ice Chips  
8947



Vanilla Latte Spice  
8945



Winter Frostings  
8944



Congo White 6638



Chloe, Harbour City, Hong Kong  
Glacier White 8924



AMC Theatre,  
Pacific Place, Hong Kong  
Glacier White 8924

03

# AUTUMN MAPLE COLLECTION

Autumn in Canada is one of the most beautiful seasons. These colours are a reflection of the different colours Canadians get to experience every year. Why not bring one of these Canadian Autumn inspired colours into your kitchen? One of these colours in your kitchen will make you feel as though you are out in the nature with the fresh cool air.



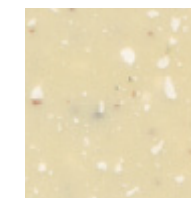
Canary Yellow  
0781



Natural Pearl  
5586



Ivory Fuzz  
6612



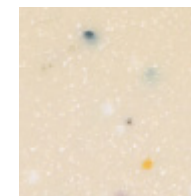
Ivory Grey  
6618



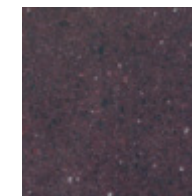
Red Hill  
6619



White Mica  
6626



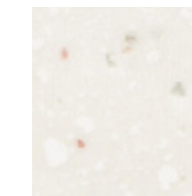
Ultra Blanc  
6642



Brown Rust  
6661



Yuma Yellow  
6675



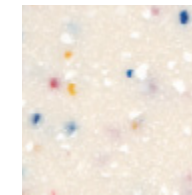
Ballet  
6684



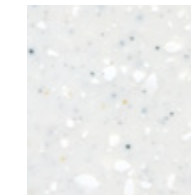
Peach Blow  
6690



Red Fuzz  
8706



Carnival  
8925



Autumn Essences  
8946



Snow in Autumn  
8948



Ballet 6684



Ballet 6684

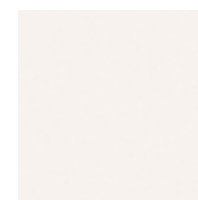


White Mica 6626

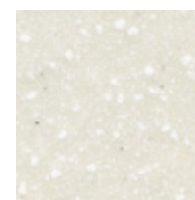
04

# NORDIC COLLECTION

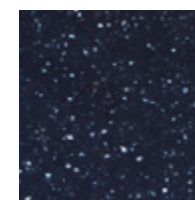
Brilliant's Nordic colours consist of whites and cool colours giving you and your family a taste of a Canadian winter. The relaxing colours are perfect for family gatherings in your kitchen where the most memorable moments are made.



White  
3130



Cascade White  
5503



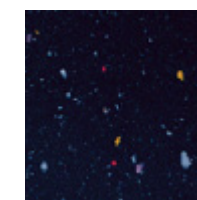
North Star  
5521



Black  
6160



Jade White  
6623



Black Forest  
6656



Yellow Sand  
6685



Ice Point  
6686



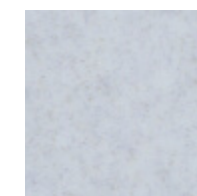
Ice Sand  
6688



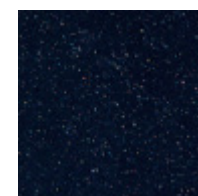
Jade Pearl  
6691



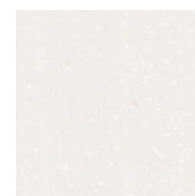
Grey Fuzz  
8702



Blue Fuzz  
8705



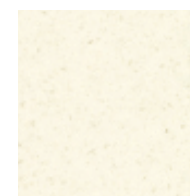
Pure Star  
8806



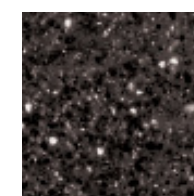
Pure Diamond  
8808



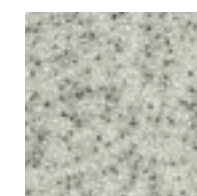
Yuma White  
8901



Snow  
8906



Star Night  
8909



Winter Haze  
8913



HSBC Guangzhou  
Black 6160



AMC Pacific Place,  
Hong Kong  
Pure Star 8806

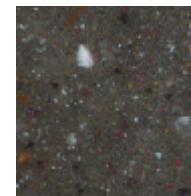


Grey Fuzz 8702

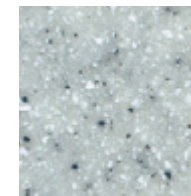
05

# ROCKY MOUNTAIN COLLECTION

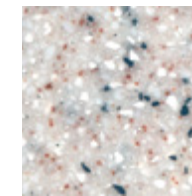
If you love the colours of the Canadian West Coast, this collection is perfect for you. The colours resemble the famous Canadian Rockies and you can bring that right into your kitchen.



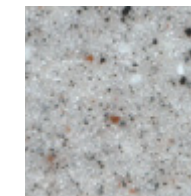
Brown Walnut  
5502



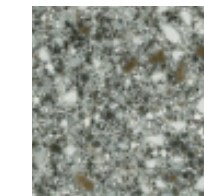
Winters Grey  
5520



Dove Grey  
6615



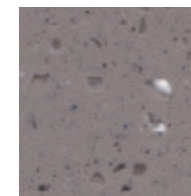
Brown Grey  
6624



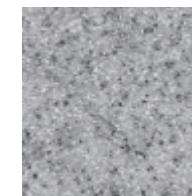
Grey Stone  
8812



Pearl Grey  
8861



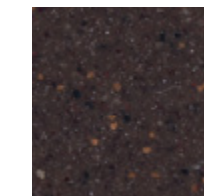
Grey Rhode  
8916



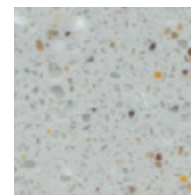
Grey Granite  
8920



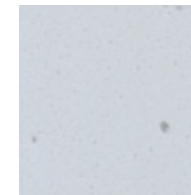
Genesis  
8926



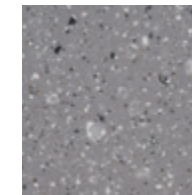
Coffee Bean  
8929



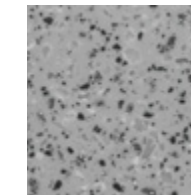
Winter Desert  
8931



Cliff Side Grey  
8943



Coal Mine  
8950



Masonry Grey  
8949



Grey Stone 8812



Winters Grey 5520

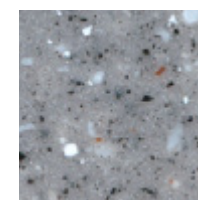
06

# COASTAL COLLECTION

Canada has two great bodies of water surrounding both the West and East coast. The colours selected for this particular series is a mirror image of what you would see if you travelled to the Pacific Northwest and Atlantic Maritimes.



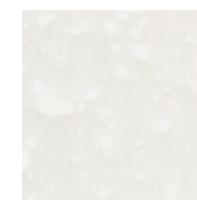
Dove Yellow  
6633



Quill Gray  
6636



Yellow Birch  
6651



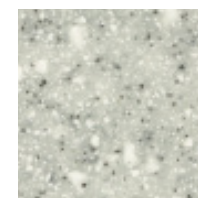
Snow White  
6665



Ice Mountain  
6680



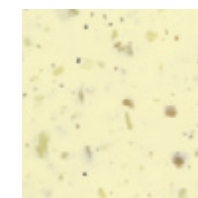
Gritstone  
8818



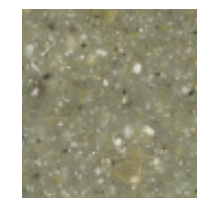
Slicerade  
8902



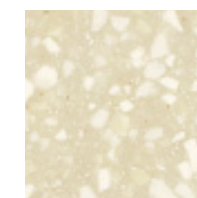
Graceful  
8903



Orpi Mist  
8904



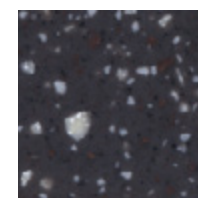
Pesto Mist  
8905



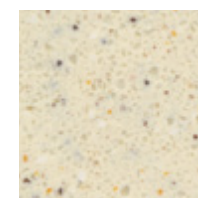
Constellation  
8907



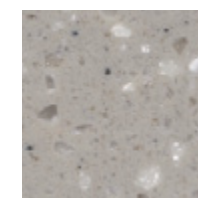
Bud  
8930



Lava  
8932



Coloured Glaze  
8933



Cappuccino  
8934



Pink Jade  
8935



Ice Carved  
8936



Ice Rain  
8942



Snow White 6665



Snow White 6665



Slicerade 8902

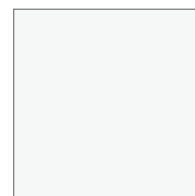
07

# DESIGNER'S SERIES COLLECTION

This particular collection is dedicated to all the architects and designers that are planning for any large-scale projects. Whatever your decision is, one of these colours will either brighten up the room or revamp the room into a cool and modern feel.



Polar White  
DS7801



Arctic White  
DS7802



Ice Field White  
DS7803



Ivory  
DS7804



Barley  
DS7805



Apricot  
DS7806



Misty Grey  
DS7807



Clear Water Blue  
DS7808



Light Olive  
DS7809



Taupe Grey  
DS7810



Dark Chocolate  
DS7811



Midnight Black  
DS7812



Arctic White DS7802



Taupe Grey DS7810



Midnight Black DS7812

# Quartz

## S U R F A C E

Brilliant Quartz is composed with natural quartz sands and artificial resin and polymer to create the most natural appearance of granite without compromising the performance. It is non-porous, and highly resistant to heat and scratches. Brilliant Quartz can also be used for flooring tiles due to the strength of the material. Brilliant Quartz is offered in the standard 15mm thickness but thicknesses of 20mm and 30mm can also be provided on a large commercial-scale basis. Stay tuned and check in with us as we continue to update and add colours for the Brilliant Quartz line.



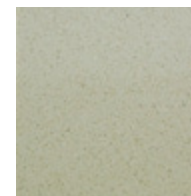
Quartz Code?????



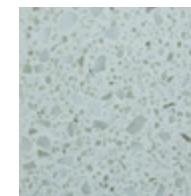
Quartz Code??????



Black Night  
ST101



Dene  
ST110



Snow Flake  
ST121B



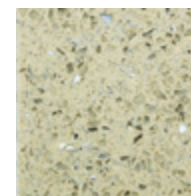
Hyalite  
ST124



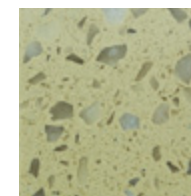
Brown Cafe  
ST167



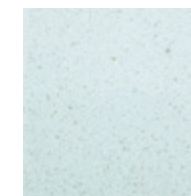
Cream Yellow  
ST192



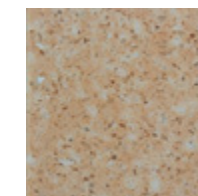
Moon Mineral  
ST195



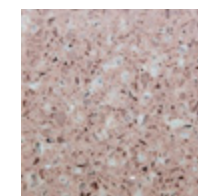
Brown Rice  
ST205



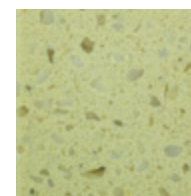
Wafer  
ST219



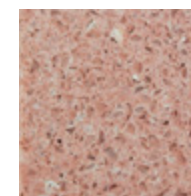
Peaches & Cream  
ST243



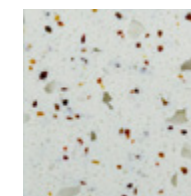
Pink Crystal  
ST244



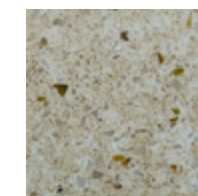
Creamy Vanilla  
ST245



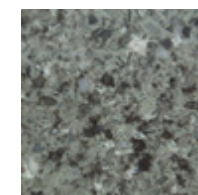
Sakura  
ST268



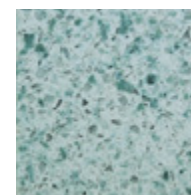
Bahamas Stone  
ST294



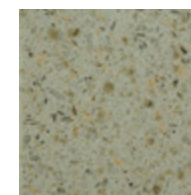
Macchiato  
ST297



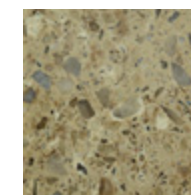
Cambridge Stone  
ST341



Verdure Sea  
ST351



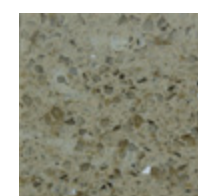
Honeycomb  
ST353



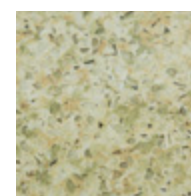
Amber  
ST354



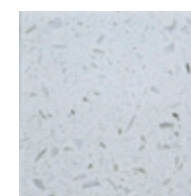
Galaxy  
ST356



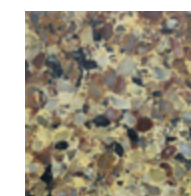
Microlite  
ST363



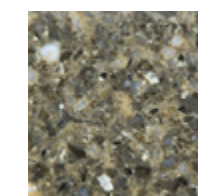
Mixed Forest  
ST396



White Ocean  
Treasures  
ST587



Coral  
ST588



Brown Rock  
ST589

# Quartz

## S U R F A C E

Brilliant Quartz is composed with natural quartz sands and artificial resin and polymer to create the most natural appearance of granite without compromising the performance. It is non-porous, and highly resistant to heat and scratches. Brilliant Quartz can also be used for flooring tiles due to the strength of the material. Brilliant Quartz is offered in the standard 15mm thickness but thicknesses of 20mm and 30mm can also be provided on a large commercial-scale basis. Stay tuned and check in with us as we continue to update and add colours for the Brilliant Quartz line.



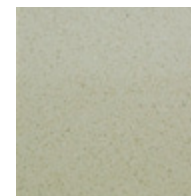
Quartz Code?????



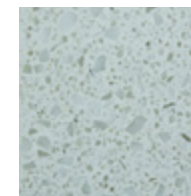
Quartz Code?????



Black Night  
ST101



Dene  
ST110



Snow Flake  
ST121B



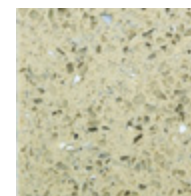
Hyalite  
ST124



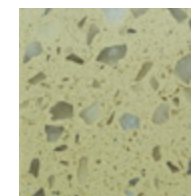
Brown Cafe  
ST167



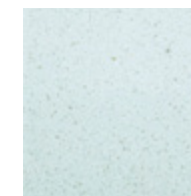
Cream Yellow  
ST192



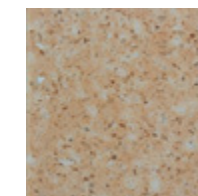
Moon Mineral  
ST195



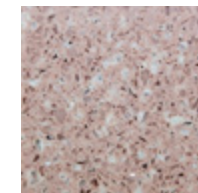
Brown Rice  
ST205



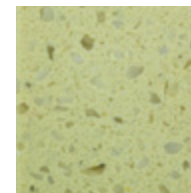
Wafer  
ST219



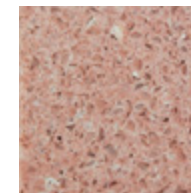
Peaches & Cream  
ST243



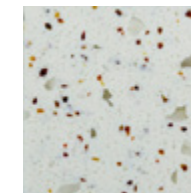
Pink Crystal  
ST244



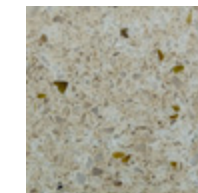
Creamy Vanilla  
ST245



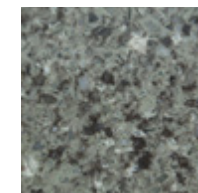
Sakura  
ST268



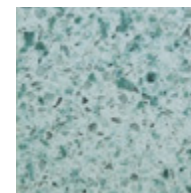
Bahamas Stone  
ST294



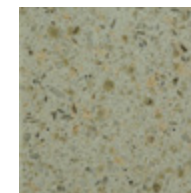
Macchiato  
ST297



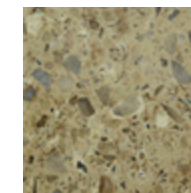
Cambridge Stone  
ST341



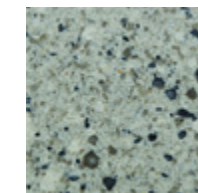
Verdure Sea  
ST351



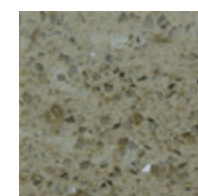
Honeycomb  
ST353



Amber  
ST354



Galaxy  
ST356



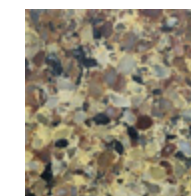
Microlite  
ST363



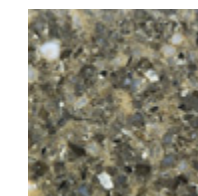
Mixed Forest  
ST396



White Ocean  
Treasures  
ST587



Coral  
ST588



Brown Rock  
ST589

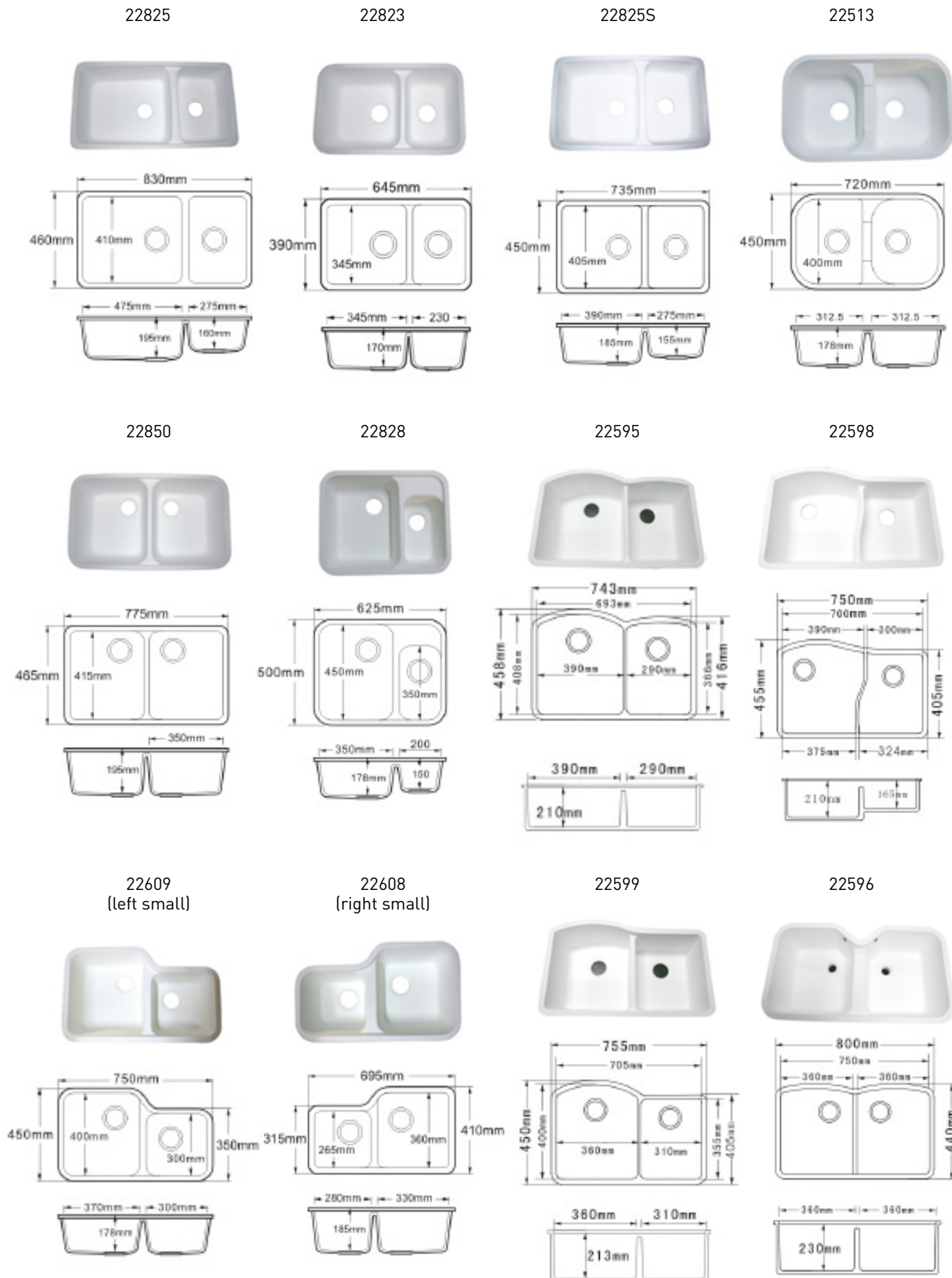
## SINKS

# SOLID SURFACE SINKS

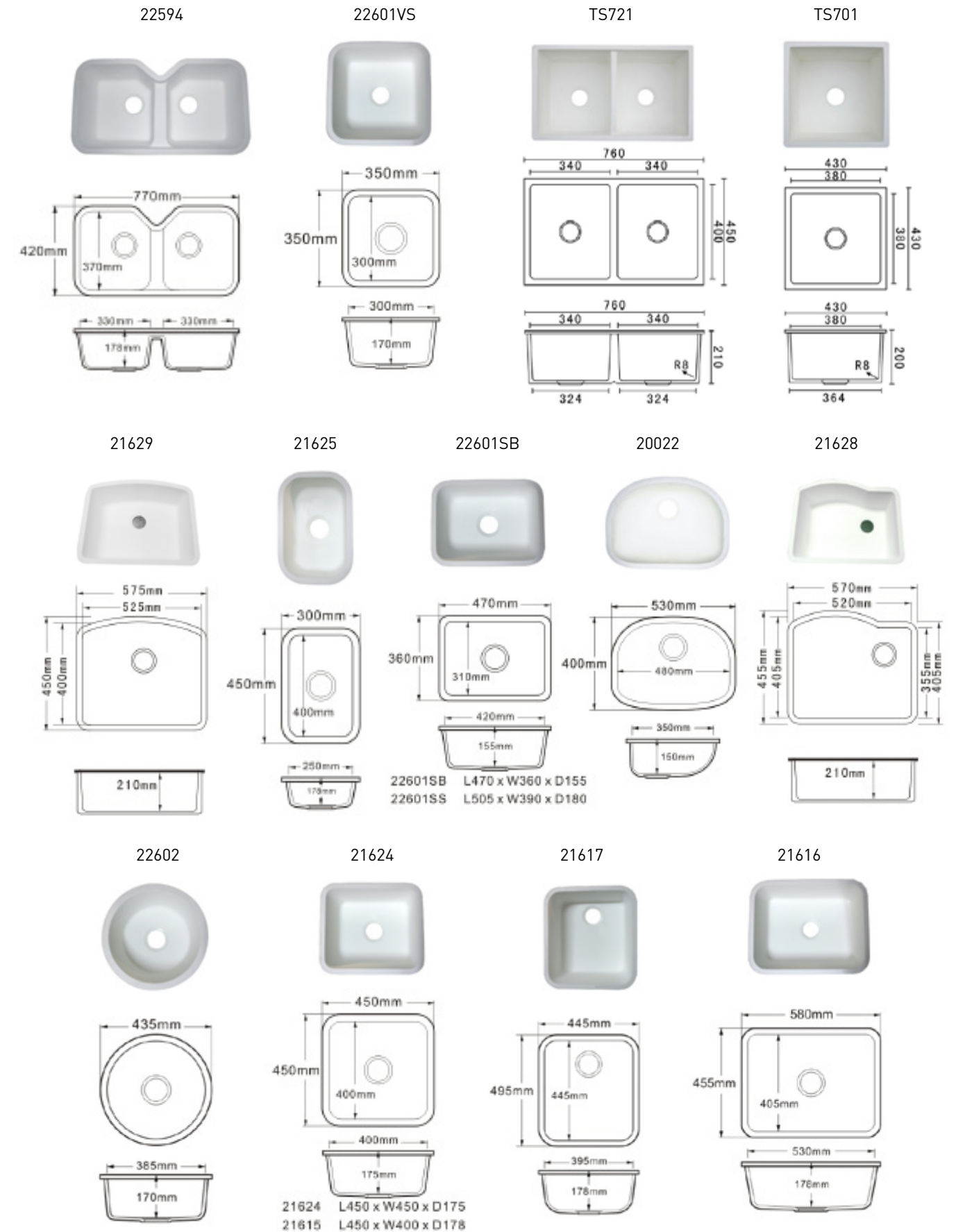
Brilliant has dug deep into a consumer's thoughts when selecting a new sink. After all, a sink is like the heart of the kitchen. Brilliant's solid surface sinks are well known for its reliability and ergonomic designs.



## OUR SOLID SURFACE SINKS



## OUR SOLID SURFACE SINKS



SINKS

VANITIES

Brilliant is experienced in making vanities a statement and at the same time a functional work surface in your bathroom.

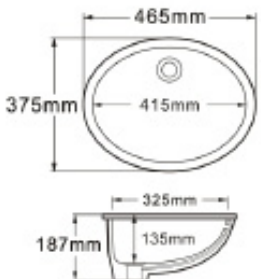


OUR VANITIES

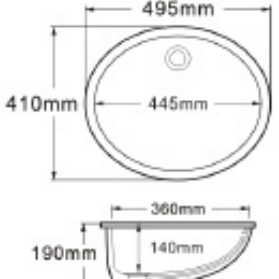
22605



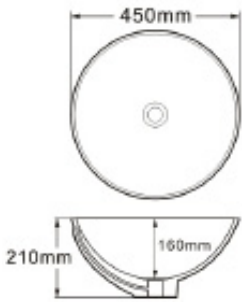
20081



20029NS



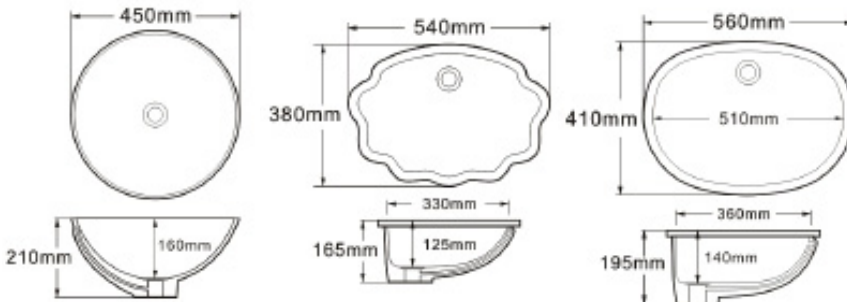
20024



20023



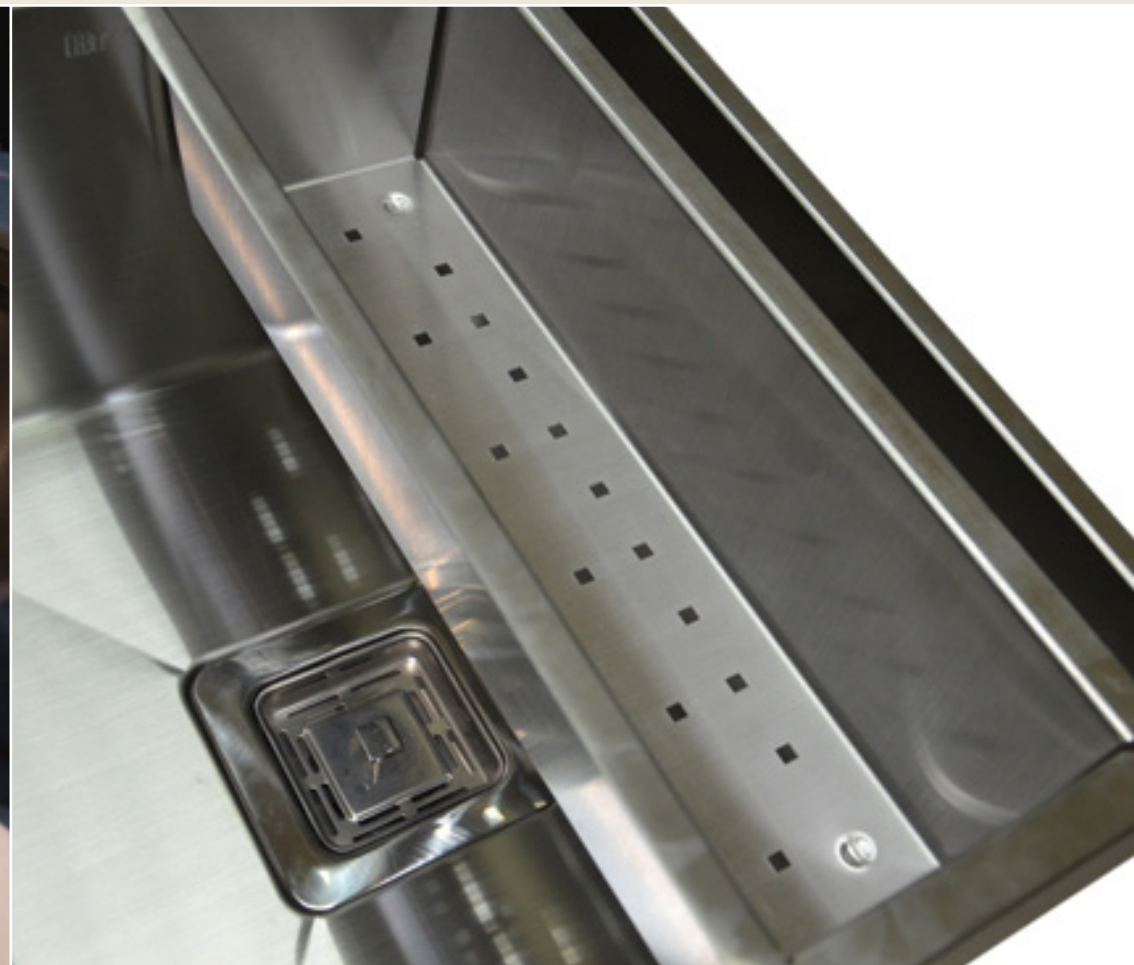
20021



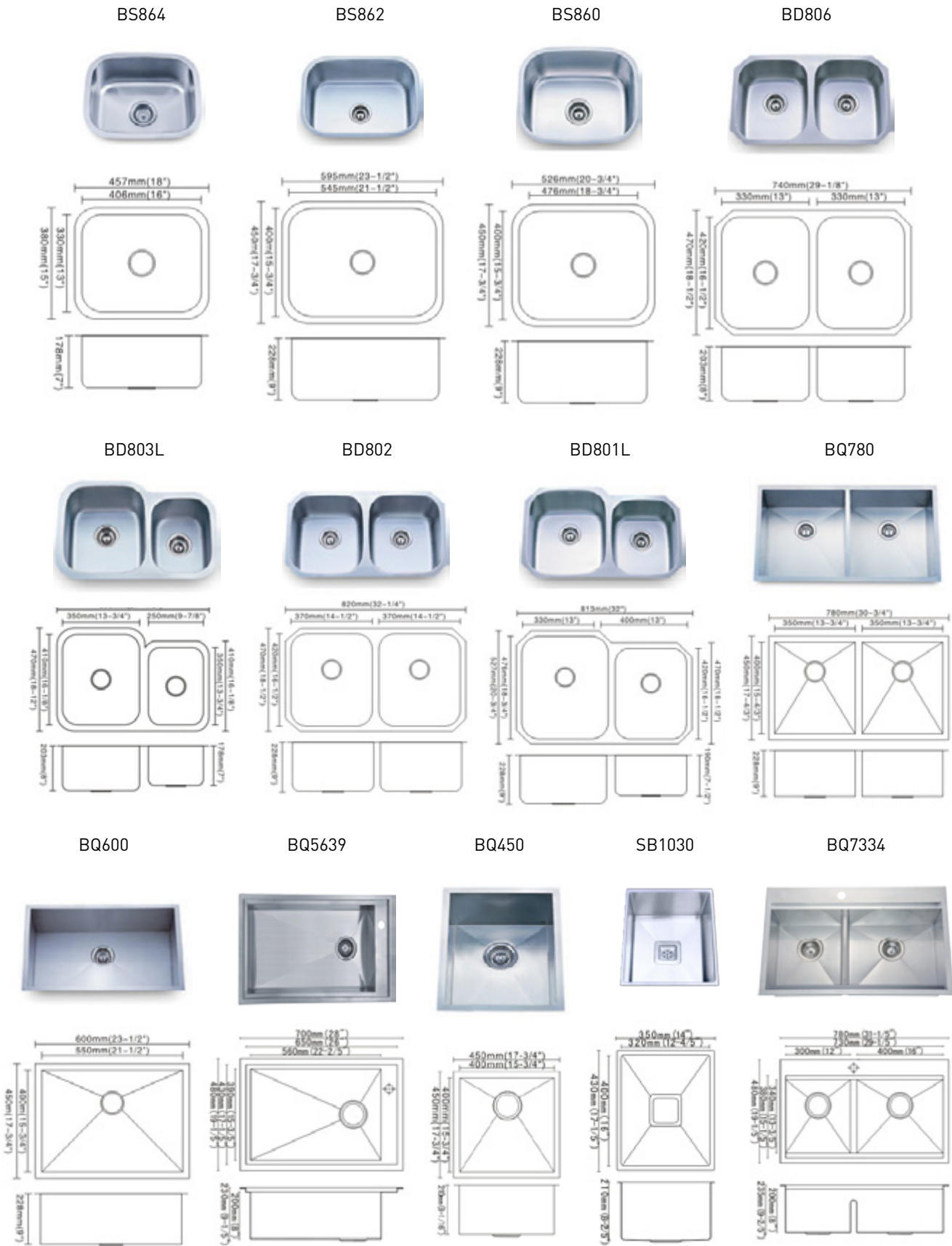
## SINKS

# STAINLESS STEEL SINKS & COLANDERS

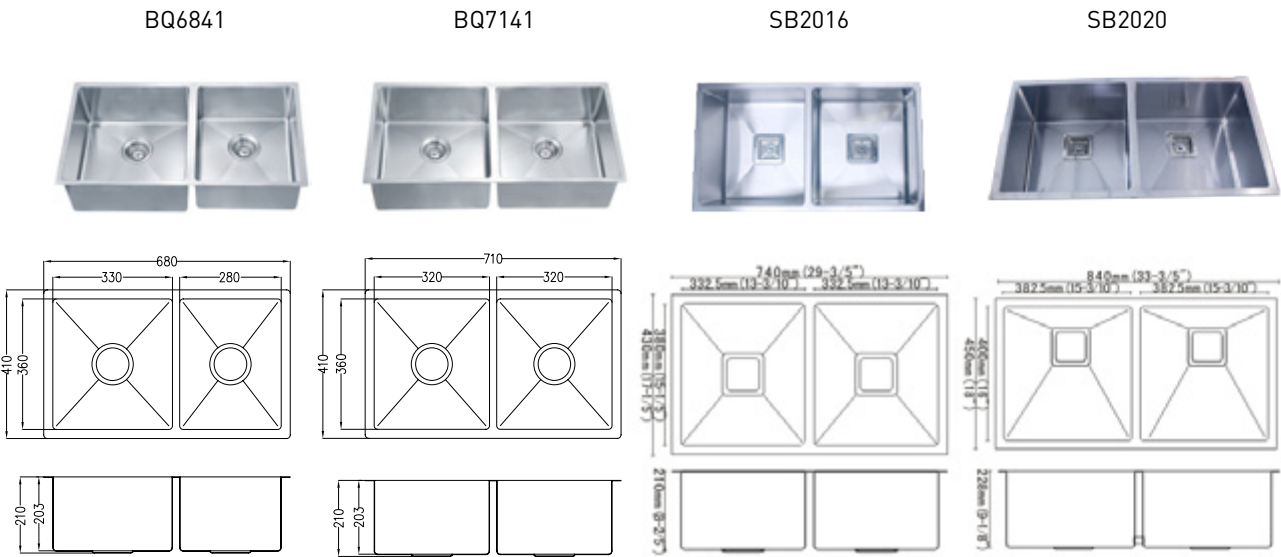
Brilliant's 304 stainless steel sinks are perfect for both traditional and modern kitchens. Brilliant's modernized 304 stainless steel colanders are functional and space saving. Our 304 stainless steel colanders are made to match our stainless steel sinks and they shouldn't be separated as they are like siblings in the kitchen working together.



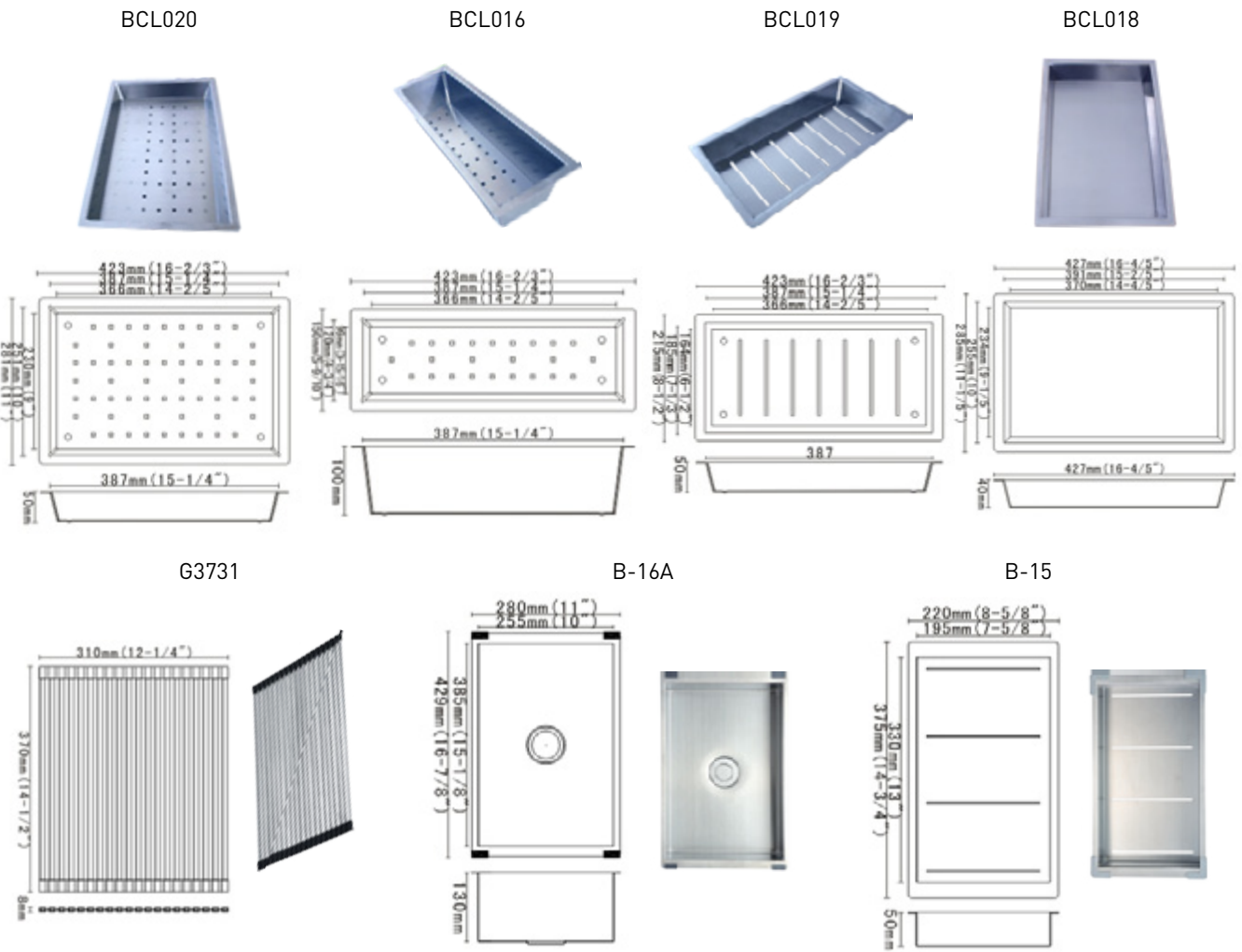
OUR STAINLESS STEEL SINKS



OUR EURO STYLE STAINLESS STEEL SINKS



OUR COLANDERS



## TECHNICAL DATA

PROPERTY	TEST METHOD	RESULTS
Tensile Strength	ASTM D638-10	31.4 MPa
Tensile Elongation	ASTM D638-10	0.387%
Tensile Modulus	ASTM D638-10	9.71 GPa
Flexural Strength	ASTM D790-10	43.1 MPa
Flexural Modulus	ASTM D790-10	7.74 GPa
Izod Impact Resistance	ASTM D256-10	0.321 ft-lb/in
Coefficient of Linear Thermal Expansion	ASTM D696-08	3.76 E-05 / per °C
Barcol Hardness	ASTM D2583-07	62
Density	ASTM D792-08	1.72g/cm3
Specific Gravity	ASTM D792-08	1.72
Water Absorption	ASTM D570	0.02% (2 Hours) 0.08% (24 Hours)  0.06% (Soluble Matter Lost)
Surface Burning	ASTM E84	Flame Spread Class A ←25  Smoke Developed Class A

\*As of Sept 2012  
\*Test Reports and Full  
Specifications can be downloaded  
from [www.brilliantsurfacing.com](http://www.brilliantsurfacing.com)

## CARE & MAINTENANCE

Brilliant Solid Surface products are known to be reliable and durable. By following Brilliant’s care and maintenance guide you will be able to maintain your solid surface as if you just bought it yesterday.

On a day-to-day basis when using your Brilliant Solid Surface products, pay attention and follow this guideline to care and maintain your product:

1. Avoid placing heavy or sharp-edged objects on the surface.
2. Do not use the surface as a cutting board.
3. Do not place hot pots or pans (taken directly from the stove) on the surface. (Use pads or holders when placing hot objects on the surface)
4. Do not use harsh commercial chemicals to clean the surface.
5. When the product is a sink and if the interior temperature is cold (6 degrees and under), do not directly pour hot water in it.
6. Brilliant Solid Surface products are designed for interior use. Exposure to direct sunlight will cause fading and discoloring.
7. When the product is used as a countertop, ensure to leave at least 80 mm space between it and the stove.

Whether the stain is a light or tough stain. By following the undemanding steps listed below you will be able to clean your Brilliant Solid Surface and quickly restore its shine and beauty.

1. Oily and light stains can be cleaned by using a mild detergent with a damp cloth or sponge. For tougher stains, use a green \*SCOTCH BRITE with an abrasive cleaner. The use of a green \*SCOTCH BRITE regularly will also keep the surface looking new.
2. For deep scratches, the first step is to use sanding paper #120 or #240. Then use #400 or #600 to sand the surface, after sanding the surface use a white \*SCOTCH BRITE with an abrasive cleaner to clean it. Use furniture polish to restore its shine.
3. Should it ever get in contact with harsh chemicals such as paint, oven cleaner, etc., clean the surface immediately with soap and water.
4. If there is residue stains on your Brilliant solid surface sink, fill the sink with water and pour 300 cc bleach into the sink and leave it over night. After that, use a mild detergent to wash the surface. If necessary, see step 2.

\*Scotch Brite is a 3M product

**MAIN OFFICES:**

**Hong Kong (Head Office)**

76 Hung To Road  
Joint Venture Fty. Bldg. 13FL/Rm. B  
Kwun Tong, Kowloon  
Tel: 852.2951.0279  
Fax: 852.2950.4049

**Toronto, Canada**

27 Milliken Rd. Unit 13-15  
Scarborough, Ontario  
Tel: 416.828.4999

**Dongguan, China (Manufacturing Facility)**

Nancheng Industrial, Daojiao Town  
Dongguan, Guangdong  
Tel: 86.769.8883.5561  
Fax: 86.769.8883.5571

**INTERNATIONAL DISTRIBUTORS:**

**Macau S.A.R.**

Peng Kei Building Materials  
Ave. Almirante Lacerda 49-53a G/F  
Macau  
Tel: 853.2831.5699  
Fax: 853.6682.2133

**Indonesia**

JSW Surfacing Decor  
Prapen Indah C-9, Surabaya, Indonesia  
Tel: 81.230.006.301  
Fax: 31.505.1253  
Email: marketing@jswdecor.com

**Phillippines**

Streamline Kitchen  
Unit 315 AIC Burgundy Tower, ADB Avenue Corner  
Sapphire Road Ortigas Centre,  
Pasig City 1600 Philippines  
Tel: 632.584.6084  
Fax: 632.584.6079  
Email: info@piedrastones.com

**SALES OFFICES IN CHINA:**

**Beijing**

#26 Road, Hujia Park, Dongcheng District,  
Rm 403, 4/F  
Beijing, China  
Tel: 86.010.6448.3341  
Fax: 86.010.8451.2449

**Changsha**

#21 Building, Kuitang Anzhi, Yuhua District,  
Rm 501  
Changsha City, Hunan Province, China  
Tel: 86.0731.562.5309  
Fax: 86.0731.562.5309

**Fuzhou**

#589, Jinhui New Village, Lianjiang North Road,  
Jinan District  
Fuzhou City, Fujian Province, China  
Tel: 86.0591.8748.1466  
Fax: 86.0591.8749.1465

**Kunming**

A13 Building, Dashanghui Area, Qianxin Road, Rm  
501 Unit 3  
Kunming City, Yunnan Province, China  
Tel: 86.0871.457.3700  
Fax: 86.0871.457.3700

**Nanchang**

10 Building, Dikuang, Jiefan West Road,  
Rm 502 Unit 2  
Nanchang City, Jiangxi Province, China  
Tel: 86.0791.827.6001  
Fax: 86.0791.827.6001

**Nanning**

45 Building, Mingxiu, Mingxiu East Road,  
Rm 603 Unit 2  
Nanning City, Guangxi Province, China  
Tel: 86. 0771.333.5485  
Fax: 86.0771.333.5485

**Qingdao**

#19 Haier Road, 23rd Building Rm 402 Unit 3  
Qingdao City, Shandong Province, China  
Tel: 86.0531.8065.1816  
Fax: 86.0531.8065.1816

**Shenzhen**

3 Building, Xiandaihuating, Chuangye Road,  
Nanshan District, 31/F  
Shenzhen City, Guangdong Province, China  
Tel: 86.0755.8617.1727  
Fax: 86.0755.8617.1801

**Xian**

#8 Yard, Guanyin Temple Industrial Area,  
Xiying Road  
Xian City, Shanxi Province, China  
Tel: 86.029.8553.6817  
Fax: 86.029.8553.6817

**Zhengzhou**

Jindaili, Guancheng District  
Zhengzhou City, Henan Province, China  
Tel: 86.0371.6909.7020  
Fax: 86.0371.6909.7020



[www.facebook.com/brilliantssurface](https://www.facebook.com/brilliantssurface)



[www.instagram.com/brilliantssm](https://www.instagram.com/brilliantssm)



[www.pinterest.com/brilliantssm](https://www.pinterest.com/brilliantssm)



[www.twitter.com/brilliantssm](https://www.twitter.com/brilliantssm)



Wechat: brilliantssm

